

One-Piece Anchors



Acoustical Wedge Anchors • Overhead Suspensions



100 Packs

PART #	SIZE	BIT SIZE	BOX QTY/STD PK
62029	1/4 x 2-1/4	1-1/8	100*

*These items are packaged in cardboard boxes.

- Used to hang lighting fixtures and drop ceilings from concrete.
- Great for concrete and other solid materials.
- **Installation:** See wedge anchors on page 49. Sets when load is applied.

Sleeve Anchors • Medium Duty • Cinderblock & Brick



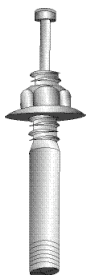
100 Packs

PART #	SIZE	NUT STYLE	BOX QTY/STD PK
61413	1/4 x 1-3/8	Acorn	*100
61422	1/4 x 2-1/4	Acorn	*100
61617	3/8 x 1-7/8	Hex	*50
61630	3/8 x 3	Hex	*50
61640	3/8 x 4	Hex	*50
61822	1/2 x 2-1/4	Hex	*25
61830	1/2 x 3	Hex	*25
61840	1/2 x 4	Hex	*25

*These items are packaged in cardboard boxes.

- Can be used in brick, cinder block, thin wall, as well as solid concrete.
- Can be removed after installation (unlike wedge anchor).
- **Installation:** See wedge anchors on page 49. Use same drill size as bolt diameter.

Strike Set Anchors • Solid Concrete



10 Packs

PART #	SIZE	BOX QTY
63029	1/4 x 1-3/4	10
63039	1/4 x 2-3/8	10
63239	3/8 x 2-3/8	10
63257	3/8 x 3-1/2	10

*These items are packaged in cardboard boxes.

- ICBO# 5045
- Easier, faster installation.



100 Packs

PART #	SIZE	BOX QTY
63028	1/4 x 1-3/4	*100
63038	1/4 x 2-3/8	*100
63132	5/16 x 2	*100
63144	5/16 x 2-3/4	*100
63238	3/8 x 2-3/8	*100
63256	3/8 x 3-1/2	*100
63276	3/8 x 4-3/4	*100
63444	1/2 x 2-3/4	*50
63456	1/2 x 3-1/2	*50
63476	1/2 x 4-3/4	*50
63496	1/2 x 6	*50
63664	5/8 x 4	*30
63676	5/8 x 4-3/4	*25
63696	5/8 x 6	*25
63880	3/4 x 5	*20
63896	3/4 x 6	*15
63898	3/4 x 7-1/2	*10